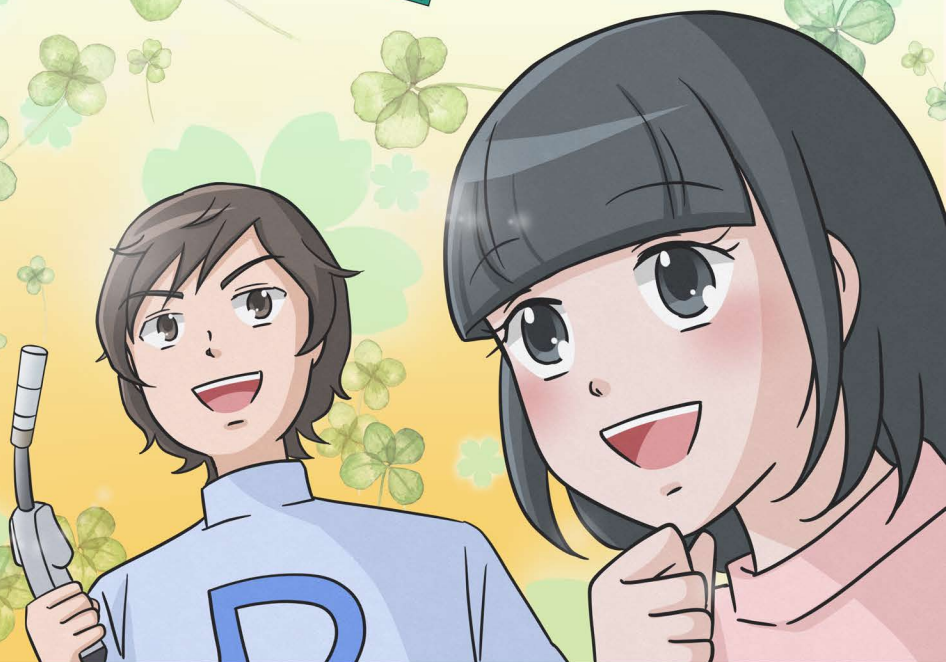


Power Source Technology for the Future

# Denyo

Denyo's Engine-Driven Welder:  
**Eco-Friendly**  
and **Cost-Effective**



 **Denyo Co.,Ltd.**

<https://www.denyo.co.jp>

ECO FESTIVAL?



WHOA!

DON'T SCARE ME, DENTO!

Oops, sorry.

**Yoko**  
Expert in engine welders

I DIDN'T MEAN TO SCARE YOU LIKE THAT...

ANYWAY, THERE'S GOING TO BE A FESTIVAL?

**Dento**  
Looking to buy an engine welder

YEP, NEXT MONTH.

ITS MAIN PURPOSE IS TO RAISE AWARENESS ABOUT THE ENVIRONMENT.

I see.

COMPANIES, ORGANIZATIONS, AND PEOPLE ATTEND THE FESTIVAL TO SHOWCASE THEIR WORK ON BETTERING THE ENVIRONMENT.

I AM A VOLUNTEER IN THE ADMINISTRATION.

COMPANIES THAT HAVE STARTED TO TAKE AFFIRMATIVE ACTION TOWARDS BETTERING THE ENVIRONMENT AS A PART OF THE SDGs HAVE INCREASED RECENTLY.

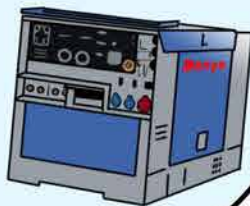


I AM TRYING TO DO THE BEST I CAN FOR THE ENVIRONMENT, TOO, BUT...



FOR PEOPLE LIKE ME WHO DO WELDING WORK OUTSIDE...

WE MAINLY USE ENGINE-DRIVEN WELDERS.



THIS MAKES IT CHALLENGING TO TAKE AFFIRMATIVE ACTION TOWARD THE ENVIRONMENT SINCE WE EMIT EXHAUST GAS...

What?  
Even me?

YOU CAN WORK ON ENVIRONMENTAL ISSUES THROUGH YOUR WORK, TOO.

YOU ARE GOING TO START WELDING WITH DENYO'S ENGINE WELDER, RIGHT?

TA-DA!

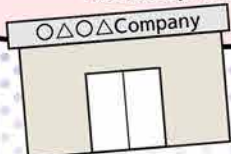
E

DENYO IS WORKING ON **SDGs** PRESERVATION OF THE GLOBAL ENVIRONMENT BY DEVELOPING AND MANUFACTURING PRODUCTS WITH HIGH ENVIRONMENTAL PERFORMANCE.

DENYO'S ENGINE WELDER HAS **MANY TYPES OF ENVIRONMENTALLY FRIENDLY FUNCTIONS!**

GO

MAYBE YOU JUST FORGOT THOSE, EVEN THOUGH DEALERS HAD EXPLAINED THOSE FUNCTIONS AT THEIR STORES, BECAUSE YOU WERE MORE FOCUSED ON OTHER FEATURES.



WHAT?  
REALLY...?

COME TO THINK OF IT, I ONLY REMEMBER ASKING ABOUT THE SAFETY AND PRICE RANGE...

Proud\*

I THOUGHT IT WAS DOING THE EXACT OPPOSITE OF BEING ENVIRONMENTALLY FRIENDLY SINCE THEY EMIT EXHAUST GAS...

THEN LET ME BE THE ONE TO TEACH YOU!

Hmm...



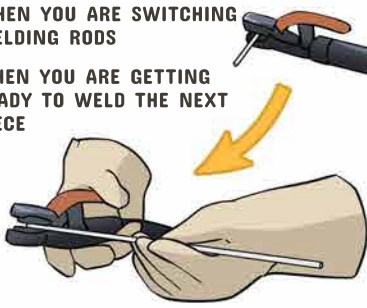
WHEN YOU ARE STICK WELDING, YOU SWITCH WELDING RODS, SO YOU ARE NOT WELDING CONSECUTIVELY, AND YOU DON'T WELD WITH THE MAXIMUM CURRENT, RIGHT?



Uh-huh.



- WHEN YOU ARE SWITCHING WELDING RODS
- WHEN YOU ARE GETTING READY TO WELD THE NEXT PIECE



I DON'T WELD CONSTANTLY... AND I DON'T ALWAYS USE THE HIGHEST SETTING SINCE THE CURRENT DIFFERS BASED ON THE MATERIAL AND THE THICKNESS OF THE BASE MATERIAL AND THE WELDING RODS.

BUT WHAT DOES THAT HAVE TO DO WITH REDUCING THE EXHAUST GAS?



USUALLY, ENGINE WELDERS ROTATED THE ENGINE AT HIGH SPEED NO MATTER THE WELDING CURRENT...

BUT IF YOU THINK ABOUT IT, THE ENGINE SPEED SHOULD MATCH ACCORDING TO THE REQUIRED WELDING CURRENT.



SO, IF YOU CAN CHANGE THE ENGINE SPEED FROM HIGH TO LOW WHEN YOU ARE WELDING AT A LOW CURRENT, THAT WILL REDUCE THE FUEL CONSUMPTION AND EXHAUST GAS.



OH! SO IF I CAN CONTROL THE ENGINE ROTATION, I CAN CONTROL THE EXHAUST GAS, TOO!

EXACTLY!



AND DENYO'S ENGINE WELDER COMES WITH THE FUNCTION THAT CONTROLS THE ENGINE SPEED!



THE FUNCTIONS OF THE ENGINE SPEED CONTROL DIFFER FROM MODEL TO MODEL.



THERE ARE **THREE TYPES OF ENGINE SPEED CONTROL**, AND YOU CAN TURN IT OFF AND ON AND CHOOSE ENGINE SPEED CONTROL WITH A SWITCH.

### SLOWDOWN (OR IDLECONTROL)

•When you stop welding for a certain amount of time (9 to 10sec), the engine automatically goes into low speed, about 2000min<sup>-1</sup>.

•And when you start welding again, it automatically goes back to **high-speed**.



### eMODE: TWO POSITION TYPE (ON/OFF)

•Original speed is low at 2200min<sup>-1</sup>.

•The engine speed can be switched from low to high depending on the welding output.

Useful for when you need half the maximum current, like when using a thin welding rod.



### eMODE: THREE POSITION TYPE (VARIABLE/HIGH-LOW/HIGH)

•For Variable, when you are welding, the engine speed automatically sets to its required. At no load, it automatically sets to low engine speed (2200min<sup>-1</sup>).

•High-low is the same as Slowdown

•High is on high speed consistently.



### DENYO'S ENGINE WELDER'S THREE ENGINE SPEED CONTROL

SO, TO SUM UP,



SLOWDOWN	ON	OFF
Welding	High	High
Use AC Power	High	High
Rest (No Load)	Low	High

eMODE (2 POSITION)	ON	OFF
Welding	Low ⇄ High	High
Use AC Power	High	High
Rest (No Load)	Low	High

eMODE (3 POSITION)	VARIABLE	HIGH-LOW	HIGH
Welding	Low ⇄ High	High	High
Use AC Power	High	High	High
Rest (No Load)	Low	Low	High



WELDING



AC POWER



RESTING



WHEN YOU USE YOUR TOOL WITH AC POWER, EVEN WHEN ALL OF THE FUNCTIONS ARE ON, IT WILL **AUTOMATICALLY BE ON HIGH SPEED TO REGULATE THE VOLTAGE**, SO ALWAYS KEEP THAT IN MIND.

Oh, okay.

Yep!

BUT THIS IS A GREAT FEATURE SINCE YOU CAN REDUCE FUEL WHEN YOU'RE JUST WELDING!

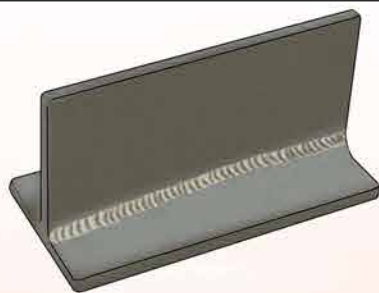
BY THE WAY, THE ONE YOU'RE PLANNING ON GETTING, DLW-500ISW IS A THREE POSITION TYPE eMODE.

IF YOU HAVE THE VARIABLE OPTION ON A THREE POSITION TYPE eMODE, ISN'T HIGH-LOW UNNECESSARY?

OH, GOOD EYE, DENTO!

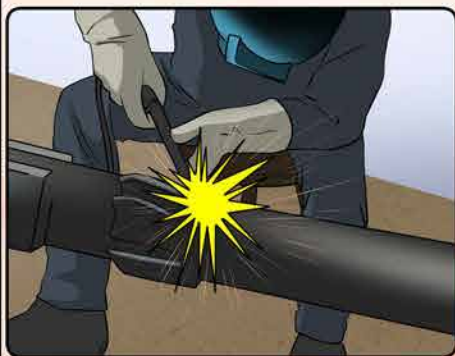
Depending on the welding rod and the welder, **High-low can make the better appearance of bead rather than with the Variable.**

Variable is more eco friendly and it should be enough for most things.



But for the purpose which you want to have a better appearance of the bead, some people just prefer High-Low.

Some people who put the appearance of the bead as top priority use the High setting too!



Prioritize fuel consumption: Variable

Prioritize fuel consumption and appearance: High-Low

Prioritize appearance: High

I SEE. I WANT TO TRY THEM OUT, JUST LIKE I DID WITH ARC FORCE REGULATORS!





I HAD GIVEN UP ON BEING ENVIRONMENTALLY FRIENDLY WITH MY JOB, BUT WITH THESE FEATURES, I CAN CONTRIBUTE!

YOU SHOULD TRY IT OUT SINCE THERE ARE USABILITY WITH EACH WELDER!

I'm relieved~

HOLD ON!  
WITH DLW-500ISW,  
THERE IS ONE MORE FEATURE  
THAT IS ECO-FRIENDLY!

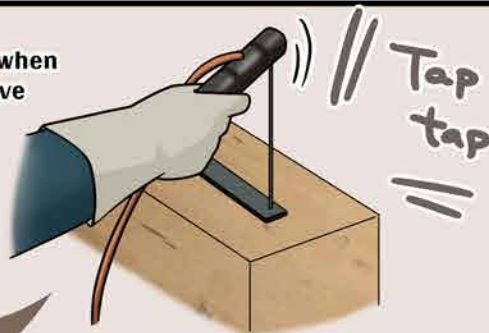
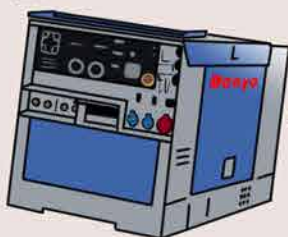
what?

YOU KNOW ABOUT  
**SMARTSTICK**, RIGHT?

YUP, IT'S MY FAVORITE FEATURE!

The engine automatically stops when a certain amount of time you have set (1 to 30min) has passed.

RESTART!



And when you want to restart it, all you have to do is tap the base material twice.

HMM... STOPS THE ENGINE WHEN IT'S NOT BEING USED AND RESTARTS WHEN NEEDED...

**STOPS THE ENGINE WHEN IT'S NOT BEING REQUIRED! THIS IS AN ECO-FRIENDLY FEATURE!**

**ECO**

ORIGINALLY IF YOU WANTED TO STOP AND RESTART THE ENGINE, YOU'D HAVE TO GO BACK AND FORTH BETWEEN THE MACHINE AND THE JOB SITE, BUT WITH DENYO'S SMARTSTICK, IT'S SO EASY!



EXACTLY! SMARTSTICK IS THE NEWER VERSION OF SLOWDOWN AND eMODE!

OH, BY THE WAY, WHEN YOU ARE USING AC POWER, SMARTSTICK DOESN'T WORK SO BE CAREFUL.

I WAS TOO FOCUSED ON THE TAPTAP RESTART, THAT I HAD FORGOTTEN ABOUT THE ECO-FRIENDLY ASPECT...

YOU MIGHT HAVE REALIZED ALREADY BUT,

WITH DENYO ENGINE WELDER, THERE IS ONE MORE THING THAT IS USEFUL FOR THE USER BESIDES BEING ECO-FRIENDLY. CAN YOU TELL WHAT THAT IS?

hmm... BY LOWERING THE ENGINE SPEED AND STOPPING THE ENGINE, IT LESSENS THE EXHAUST GAS... IT STOPS... STOPS...

I GOT IT! YOU CAN **LESSEN THE FUEL CONSUMPTION!**

YES! IT REDUCES GREENHOUSE GAS AND **RUNNING COST!**

That's amazing!



YOU DON'T TRUST ME, DENTO?

oh...

BUT LOWERING THE ENGINE SPEED AND STOPPING IT... HOW MUCH CAN THAT REALLY DO?



NO, IT'S NOT THAT I DON'T TRUST YOU, YOKO...  
I JUST CAN'T GET MY HEAD AROUND IT...

NERVOUS

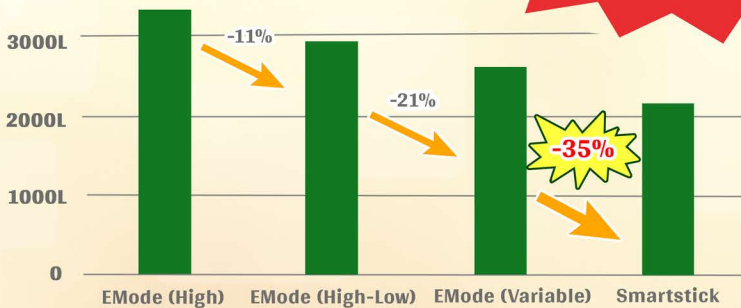
hmph.

LET ME GIVE YOU  
ACTUAL NUMBERS FOR  
DLW-500ISW, THE ONE YOU'RE  
THINKING OF BUYING.

WHEN YOU WELD AT THE FREQUENCY OF  
50HZ, WELDING POWER AT 50% (225A)  
DUTY CYCLE AT 60%, COMPARE IT WHEN  
USING eMODE TO SMARTSTICK...

### ANNUAL FUEL CONSUMPTION

IT REDUCES FUEL  
CONSUMPTION BY UP  
TO US\$1,500 YEARLY!



Hours used: 4h/day (240day/year)  
Diesel: Average price globally @ February 2022  
(cite:GlobalPetrolPrices.com)

\*The above figures are not  
guaranteed value and may vary  
depending on conditions of use.

WOW I DIDN'T THINK THE DIFFERENCE  
WOULD BE THAT NOTICEABLE! IF YOU  
CAN CUT BACK 35%, THERE'S NO  
REASON NOT TO USE IT!

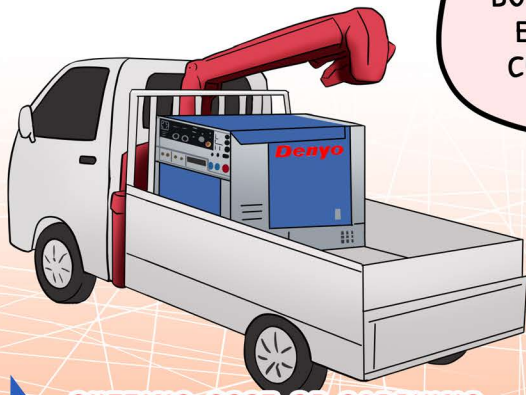
NOW DO YOU  
BELIEVE ME?

AND! GREENHOUSE GAS  
AND FUEL IS NOT THE ONLY  
THING IT REDUCES!

What?!  
There's  
more?



## LIGHT AND COMPACT



NOT ONLY THE FUNCTIONS, BUT THE DESIGN OF THE DENYO ENGINE WELDER HAVE MADE CUTTING COSTS ELSEWHERE, TOO!



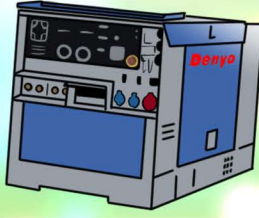
**CUTTING COST OF CARRYING AND PLACING THE MACHINE!**

AND ON TOP OF THAT, SINCE IT USES HIGH QUALITY PARTS AND MATERIALS, **DENYO'S ENGINE WELDER IS HIGHLY DURABLE, RIGHT?**



- Barely breaks down which makes it possible to have a long life
- Repairs are barely needed so it has a low running cost

Long life



Low running cost

YOKO! I HAD MADE A GREAT CHOICE WITHOUT EVEN REALIZING!

Proud★

Yes...

I THINK IT'S PROBABLY BECAUSE HE MISSED A LOT OF THE EXPLANATIONS...

NOW THAT I KNOW I AM BEING ECO-FRIENDLY EVEN WITH MY JOB, I'M GOING TO TAKE PART IN THE NEXT ECO FESTIVAL!

ALRIGHT, NOW THAT THAT'S DECIDED...

wait!

DENTO! THE ECO FESTIVAL IS NEXT MONTH... HE'S GONE...

I SHOULD GO LOOK AT WHAT EVERYONE'S WORKED ON IN THIS YEAR'S ECO FESTIVAL TO GET SOME IDEAS!!!

dash

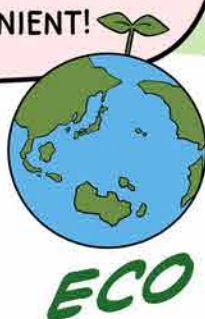




I THINK NOW YOU CAN UNDERSTAND THAT DENYO'S ENGINE WELDER IS ENVIRONMENTALLY CONSCIOUS AND CAN CUT COSTS. THEREFORE, THEIR PRODUCTS ARE ECO-FRIENDLY AND COST-EFFICIENT.

I HOPE YOU WILL TRY IT FOR YOURSELF AND SEE!

NOT ONLY IS DENYO'S ENGINE WELDER ECO FRIENDLY AND COST EFFICIENT, BUT IT CAN MAKE YOUR WELDING MORE CONVENIENT!



**Denyo**

I CAN'T TALK ABOUT EVERYTHING HERE, SO PLEASE VISIT THEIR SITE HERE.



**Denyo is Always with You**

A welding professional's most trusted partner

<https://promowelder.denyo.co.jp/>

What is Denyo?

Variety of questions

WE ARE LOOKING FORWARD TO YOUR VISIT AND INQUIRIES!

Your local shop

**PIPELINE**

- Geothermal
- Oil & Gas

**CONSTRUCTION**

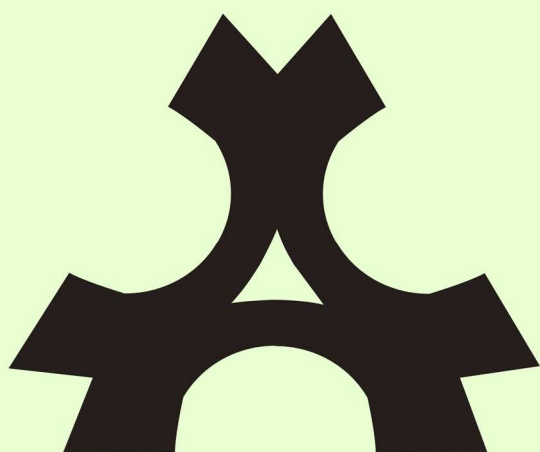
**PILE FOUNDATION WORK**

**MINING**

Actual installation examples.

UNTIL WE MEET AGAIN!





This Denyo emblem expresses

**“Benefits for Three Parties”**

Prosper together with

**“the user”, “the seller” and “the manufacturer”**

through our products.

 ***Denyo Co.,Ltd.***

Copyright©2022 Denyo Co., Ltd, All Rights Reserved

KIKA20220630-E