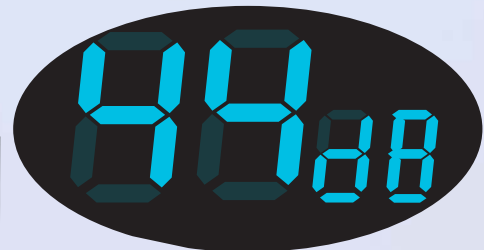


Diesel Engine Driven Soundless Generator *Mālie* DCA-45MZ

Astonishingly quiet



*Sound level reflects 50Hz high-speed no-load operation and is calculated by averaging the measurements at four points, each 7 meters from the source.



The sound volume comparison 45kVA class

Noisy

90dB

Construction Site(90dB)

80dB

In a train(80dB)

70dB

Noisy street (70dB)

60dB

Washing Machine(60dB)

50dB

Quiet Office(50dB)

40dB

Library(40dB)

30dB

Midnight in suburbs(30dB)



Sound Proof Type
DCA-45ESI

60
dB



Ultra Silent Type
DCA-45USI2

51
dB



Soundless Type *Mālie*
DCA-45MZ

44
dB

Quiet

*Sound level reflects high-speed no-load operation and is calculated by averaging the measurements at four points, each 7 meters from the source.

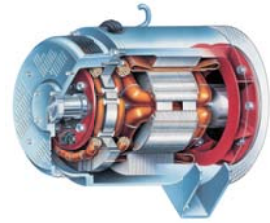
Equipped with High Performance Generator

Power Generators with Less Waveform Distortion and Voltage Fluctuation

With their intensified damper wiring, our generators are less vulnerable to waveform distortion, even when the load applied to the rectifiers changes. They are also highly resistant to negative-sequence current. Moreover, since they can restrict voltage fluctuation, they can resist inverter load, thyristor load, and computer control load. They are suitable for lighting at event sites, precision apparatuses, and measurement equipment.

Generators with Good Motor Activation

The transient reactance of our generators is low, and with the introduction of original excitation systems, their motor activation performance is good. Moreover, since our generators can reduce instantaneous voltage drops and can restore voltage in a short period of time, they have little effect on the other electric equipment when starting up devices sequentially.



ECO-BASE Body

Quick and Easy Detachment

ECO-BASE can be easily detached by removing all bolts. It is extremely easy to clean and maintain.

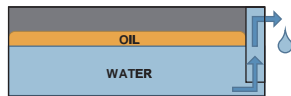
Simple Fluid Level Indicator

Fluid Level Warning Lamp gauges the level of fluid inside the ECO-BASE.

It lights up immediately when fluid reaches 50% capacity



Fluid Level Warning Lamp



Water & Oil Separating Structure

ECO-BASE is designed to separate water and oil.

Water will be discharge first when oil before ECO-BASE is filled to maximum capacity.

Easy to Drain

Water and oil collected in ECO tank drains easily through large caliber drain valve.

Swivel-type oil drain increases the speed of draining compared to conventional type.



Large Caliber



Swivel-type Oil Drain

Safety Devices

Earth Leakage Relay

To prevent electric shock, it is recommended that these generators are equipped with leakage detectors and a relay circuit breaker.

Automatic Safety Controls

The generating set shall be equipped with automatic safety controls which shuts down the engine in the event of any abnormal condition.



	Engine shut down	Circuit breaker will trip	Alarm lamp
Low lubricating oil pressure	○	—	○
High jacket water temp.	○	—	○
Over current of generator	—	○	—
Earth leakage	—	○	○
Fuel level failure	—	—	○
Air element blinding	—	—	○
Over speed	○	—	—

SPECIFICATION TABLE

MODEL		DCA-45MZ	
AC Generator			
Frequency	Hz	50	60
Output Rating	Continuous	37	45
	kVA Standby	40.7	49.5
No. of Phases	3-Phase,4-Wire		
Rated Voltage	V	190-220V ^{*1} (380-440V)	200-240V (380-480V)
Power Factor	0.8(Lagging)		
Voltage Regulation	%	Within ±0.5	
Excitation	Brushless ,rotating exciter(With A.V.R)		
Insulation	Class H		
Engine			
Model	Kubota V3800-DI-T-K3A		
Type	Direct Injected,Turbocharged,cooled EGR		
Output Rating	Ps/rpm	53.3/1500	62.7/1800
	kW/min ⁻¹	39.2/1500	46.1/1800
No.of Cylinders-Bore xStroke mm	4-100×120		
Piston Displacement	3.769		
Fuel	ASTM No. 2 Diesel Fuel or Equivalent		
Lube Oil Sump Capacity	L	13.2	
Coolant Capacity	L	12.1	
BatteryxQuantity	115D31R×1		
Fuel Tank Capacity	L	170	

UNIT		
Dimensions	Length mm	2200
	Width mm	1200
	Height mm	1490
Dry Weight	kg	1530
Sound Power Level		
7m dB(A) ^{*2}	44	49

*1 The rated output downs 10% when you set up frequency and voltage at 50Hz/220V.

*2 Sound level reflects high-speed no-load operation and is calculated by averaging the measurements at four points, each 7 meters from the source.

The specifications given herein are subject to change without notice.

Direct inquiries to the nearest Denyo distributor or to Denyo co.,Ltd.

Denyo Co.,Ltd.

Head office:2-8-5,Nihonbashi-horidomecho,Chuo-ku,Tokyo

103-8566,Japan

Tel:+81-3-6861-0055 Fax:+81-3-6861-1188

www.denyo.co.jp/english/

